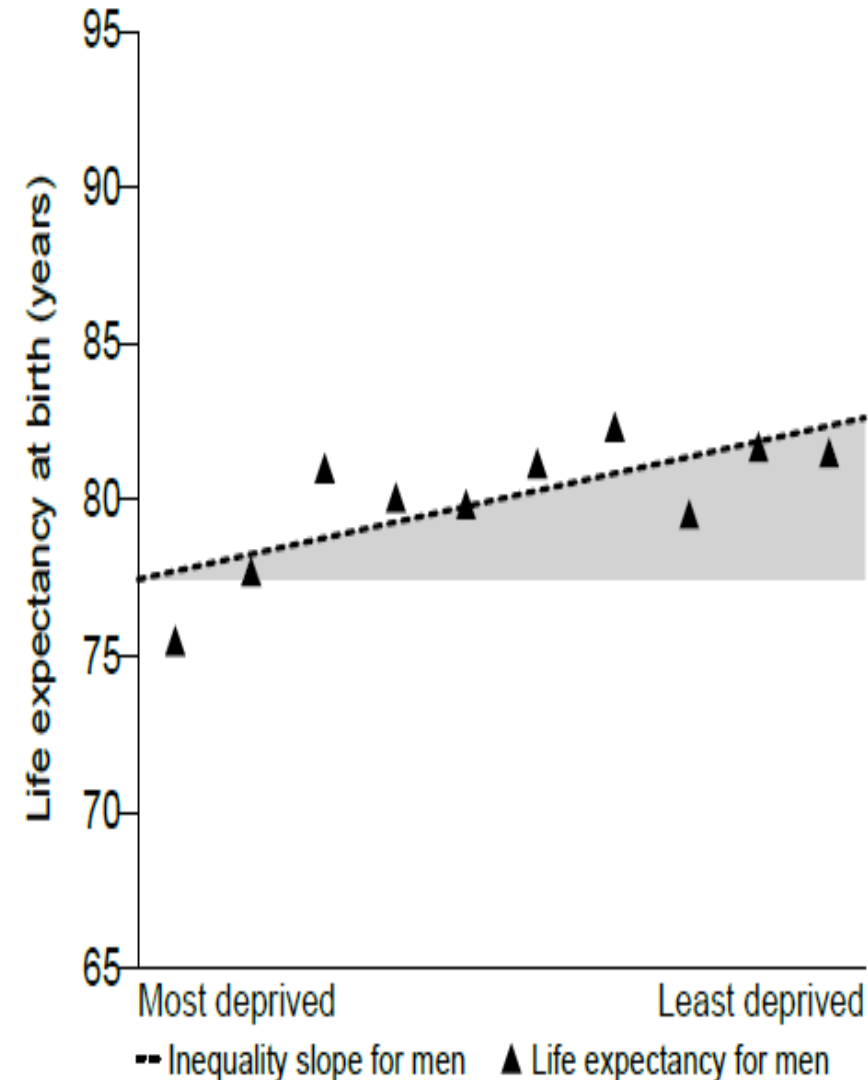


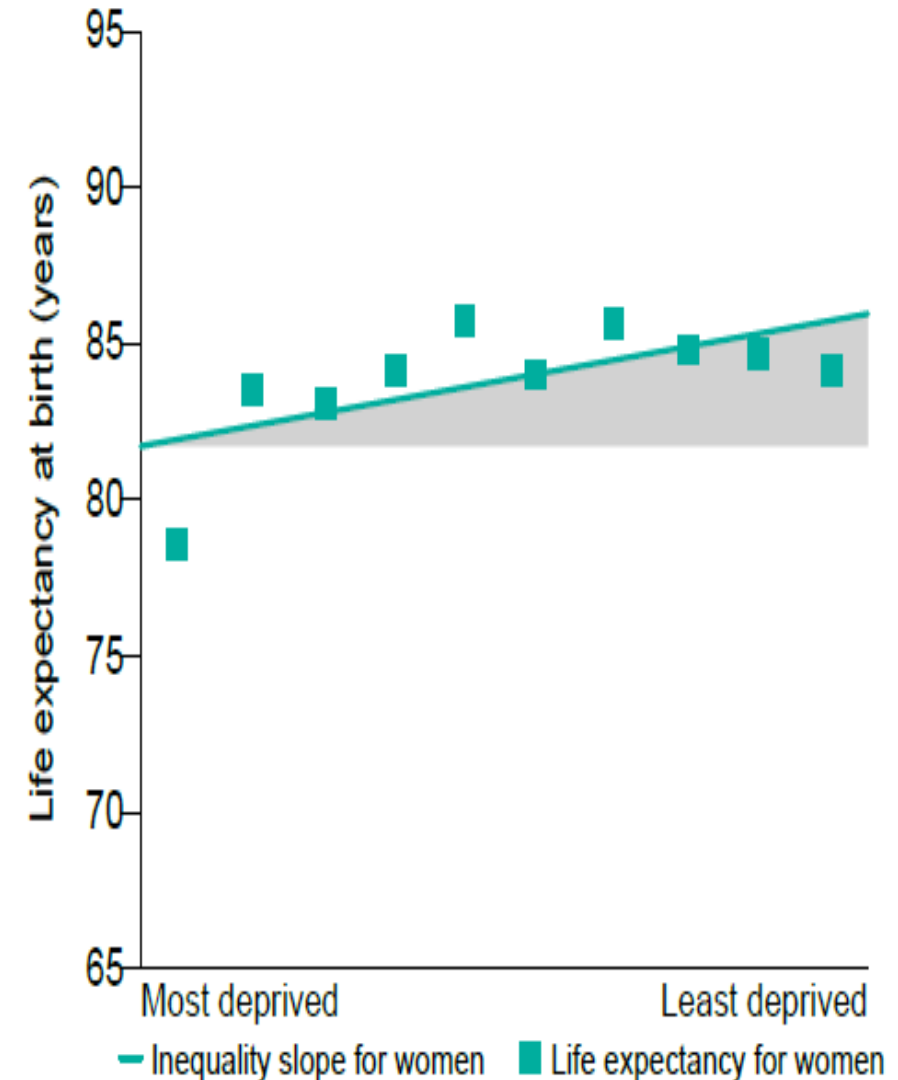
**Health and Social Care Overview and  
Scrutiny Committee  
Accountability Session  
Public Health**

# Life Expectancy at Birth – Inequalities by Deprivation

Life expectancy gap for men: 5.2 years

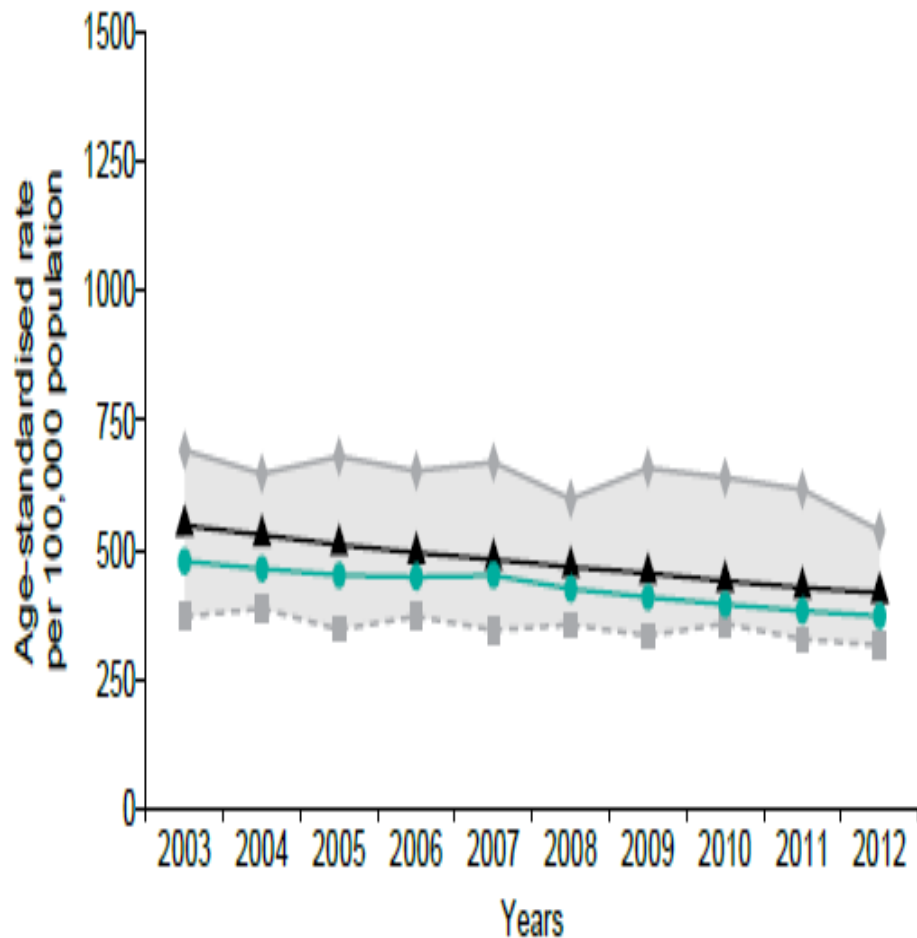


Life expectancy gap for women: 4.2 years

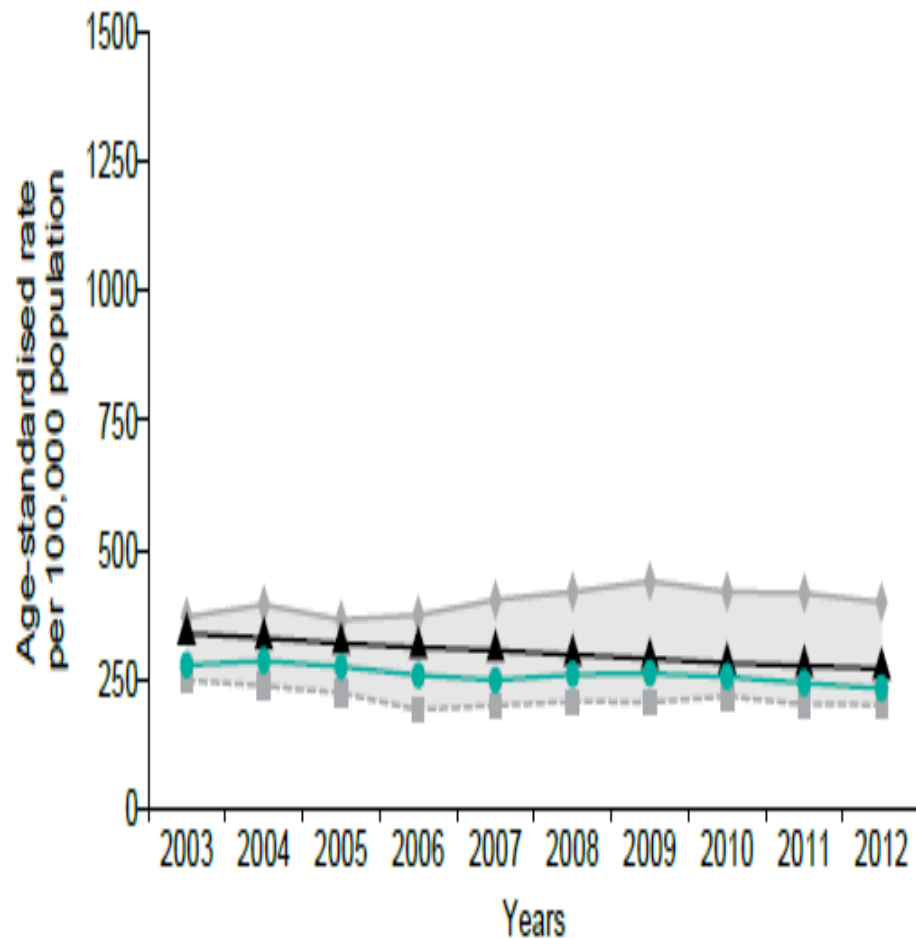


# Early Deaths by All Causes – Inequalities by Deprivation

Early deaths from all causes:  
MEN



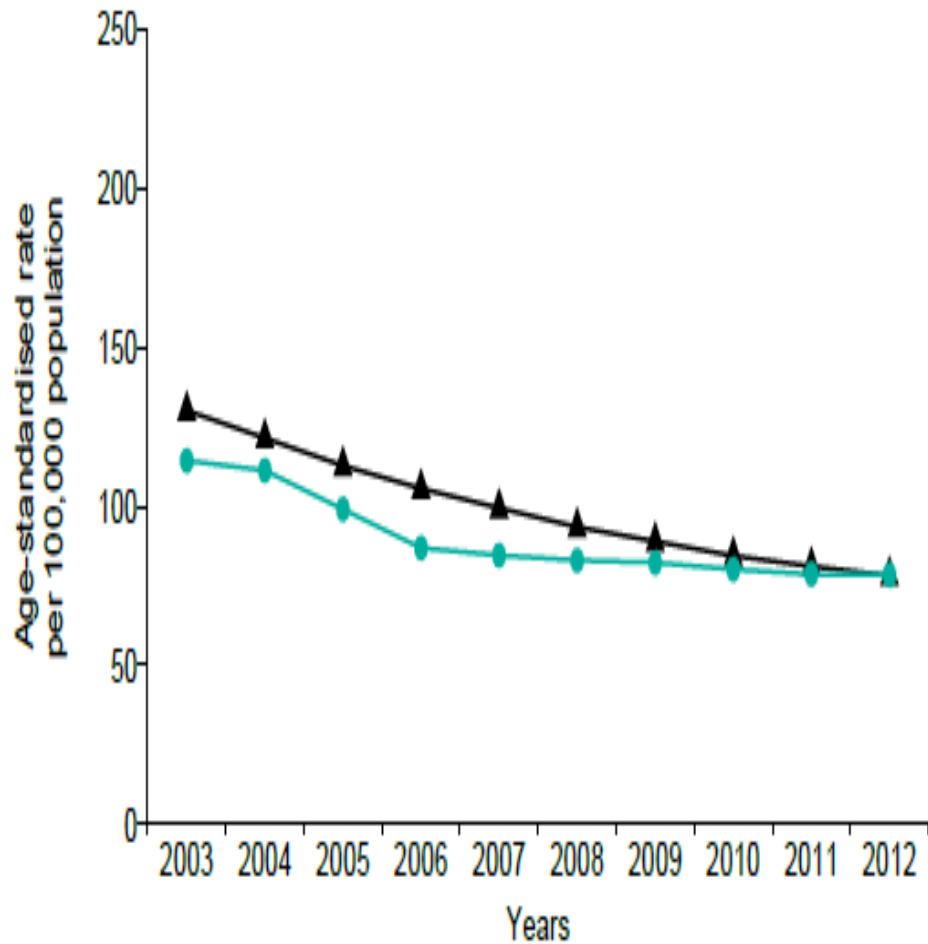
Early deaths from all causes:  
WOMEN



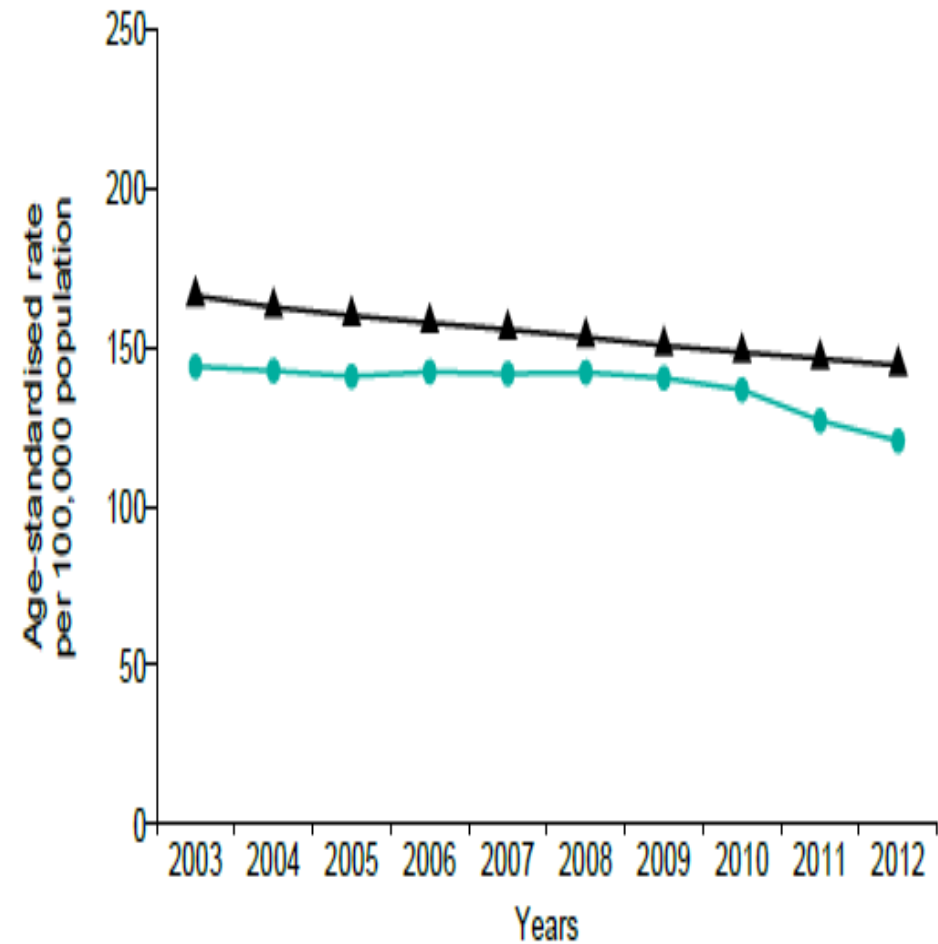
England average    
  Local average    
  Local least deprived    
  Local most deprived    
  Local inequality

# Early Deaths from heart disease & stroke and cancer – Inequalities by Deprivation

## Early deaths from heart disease and stroke



## Early deaths from cancer



England average    
  Local average    
  Local least deprived    
  Local most deprived    
  Local inequality

# Mortality and Morbidity Profile

[Healthier Lives](#)

# Population Health Profile 2015

[Population Health Profile 2015](#)

# Child Health Profile 2016

[Child Health Profile 2016](#)

# GP practice flu vaccination uptake 2015-16

Org Name	Summary of Flu Vaccine Uptake %					
	65 and over	Under 65 (at-risk only)	All Pregnant Women	All Aged 2	All Aged 3	All Aged 4
<b>ENGLAND</b>	69.8	43.6	41.4	34	35.9	28.9
NHS COVENTRY AND RUGBY CCG	64.4	45.1	46.6	26.9	31.5	25.3
NHS HEREFORDSHIRE CCG	67.9	46.3	40.5	35.2	38.1	30.6
NHS WARWICKSHIRE NORTH CCG	68.6	44.3	44.2	34.0	34.6	28.9
NHS REDDITCH AND BROMSGROVE CCG	70.7	44.7	44.0	38.7	36.9	30.9
NHS SOUTH WARWICKSHIRE CCG	75.1	50.6	47.9	49.2	47.6	41.6
NHS SOUTH WORCESTERSHIRE CCG	71.7	48.8	43.1	44.2	44.0	36.2
NHS WYRE FOREST CCG	72.8	49.5	49.1	37.9	39.0	33.4
<b>All AHW Total</b>	69.8	46.9	45.3	36.4	37.8	31.4



# Flu vaccination uptake in schools 2015-16

SIT	Area	Uptake in schools visited up to end of October
AHW	Herefordshire	64.1%
	Coventry	60.7%
	Warks	69.8%
	Worcs	65.5%
BSBC	ALL	50.9%
SS	T&W	60.7%
	Stoke	57.9%
	Shropshire	68.6%
	Staffordshire	68.4%

# Flu vaccination in HCWs 2015-16

Org Name	No. of HCWs with DIRECT Patient Care	No. Seasonal flu doses given since 1st September	% Seasonal flu doses given since 1st September 2015	Uptake December 2014	Change in 2015 compared to 2014
ENGLAND	945942	450511	47.6	52.6	-5
WORCESTERSHIRE HEALTH AND CARE NHS TRUST	3041	1309	43.0	45.1	-2.1
SOUTH WARWICKSHIRE NHS FOUNDATION TRUST	4236	1994	47.1	42.1	5.0
UNIVERSITY HOSPITALS COVENTRY AND WARWICKSHIRE NHS TRUST	5805	3515	60.6	49.7	10.9
WYE VALLEY NHS TRUST	2406	1570	65.3	57.8	7.5
GEORGE ELIOT HOSPITAL NHS TRUST	1669	736	44.1	41.9	2.2
WORCESTERSHIRE ACUTE HOSPITALS NHS TRUST	4899	2823	57.6	61.6	-4.0
COVENTRY AND WARWICKSHIRE PARTNERSHIP NHS TRUST	2969	975	32.8	44.6	-11.8
<b>Total - ALL AHW HCWs</b>	<b>25025</b>	<b>12922</b>	<b>51.6</b>	<b>49.0</b>	<b>1.1</b>

## Childhood vaccination Q1 2015-16

Upper Tier LA Name	12m DTaP/IP V/Hib %	12m MenC %	12m PCV %	12m Rota %
<b>ENGLAND</b>	<b>93.6</b>	<b>-</b>	<b>93.5</b>	<b>-</b>
AHW	<b>97.0</b>	<b>98.0</b>	<b>96.9</b>	<b>-</b>
Herefordshire	95.1	96.3	94.9	90.2
Coventry	97.7	98.1	97.7	93.7
Warwickshire	97.6	99.2	97.6	96.6
Worcestershire	96.5	97.4	96.1	93.0

# Childhood vaccination Q1 2015-16

Local Authority Name	24m DTaP/IP V/Hib3 %	24m PCV Booster %	24m Hib/Men C booster %	24m MMR1 %
<b>ENGLAND</b>	<b>95.5</b>	<b>91.8</b>	<b>91.9</b>	<b>91.8</b>
AHW	<b>98.4</b>	<b>96</b>	<b>96.5</b>	<b>96.8</b>
Herefordshire	97.3	94.6	94.6	93.9
Coventry	98.1	95.6	95.8	96.6
Warwickshire	99.4	98.6	98.9	99.2
Worcestershire	98	94.5	95.5	95.6

# Childhood vaccination Q1 2015-16

LA Name	5y DTaP/IP V/Hib %	5y MMR1 %	5y MMR2 %	5yDTaP/IPV Booster %	5y HibMen C Booster %
<b>ENGLAND</b>	<b>95.8</b>	<b>94.7</b>	<b>88.5</b>	<b>87.7</b>	<b>93.2</b>
AHW	97.5	97.5	92.8	92.1	93.9
Herefordshire	95.6	94.8	88.9	86.5	93.6
Coventry	99.1	99.2	94.4	92.2	93.1
Warwickshire	98.5	98.4	95.0	94.7	95.7
Worcestershire	96.1	96.4	91.1	91.5	93.0

# Public Health Services Commissioning – An overview

Service	Commissioner	Providers
NHS Health Checks	Herefordshire Council	Taurus, Asda, Boots, Day Lewis, Help2Change, Ice Creates, Nestor Primecare
Stop Smoking Behavioural Support	Herefordshire Council	Taurus, Asda, Boots, Day Lewis, HG Clewer, Help 2 Change, Ice Creates, Matrix Healthcare, Nestor Primcare, North 51, Rowlands
Stop Smoking Pharmacotherapy	Herefordshire Council	Boots, Chandos, Chave and Jackson, Lloyds, Rowlands
Sexual Health	Herefordshire Council	Worcester Community Healthcare Trust
Substance Misuse	Herefordshire Council	Addaction
Children 0-19	Herefordshire Council	Wye Valley NHS Trust
National Diabetes Prevention Programme	Herefordshire CCG and Council	Commissioning underway
Active HERE	Herefordshire Council	Brightstripe

# Key work completed during the year 2015/16

- Active HERE started in January 2016 targeting the inactive adult population in partnership with Brightstripe
- Herefordshire was successfully selected as a demonstration site for the National Diabetes Prevention Programme
- Transfer of the Health Visiting contract and associated public health funding to the council.

# Active HERE

- Sport England grant for 3 years with PH grant leverage
- Council has a sub grant agreement with Brightstripe to deliver with local clubs
- The Healthy Lifestyle Trainer Service acts as a Gateway by assessing and signposting people who are inactive
- Evaluation being conducted by Tiller Research Ltd.
- Launched January 2016 : 30 people now recruited



**If you're a sitting duck  
get active**



**Feel better** Improve existing health conditions, lose weight and feel good.

**Fit it in** Find an activity that you can fit into a busy life, a bit of your time and local to you.

**Friends and fitness** Meet new people, an activity to do with your friends or try something new.

**01432 383567** Active HERE can support you in finding suitable activities for you!

In partnership with:

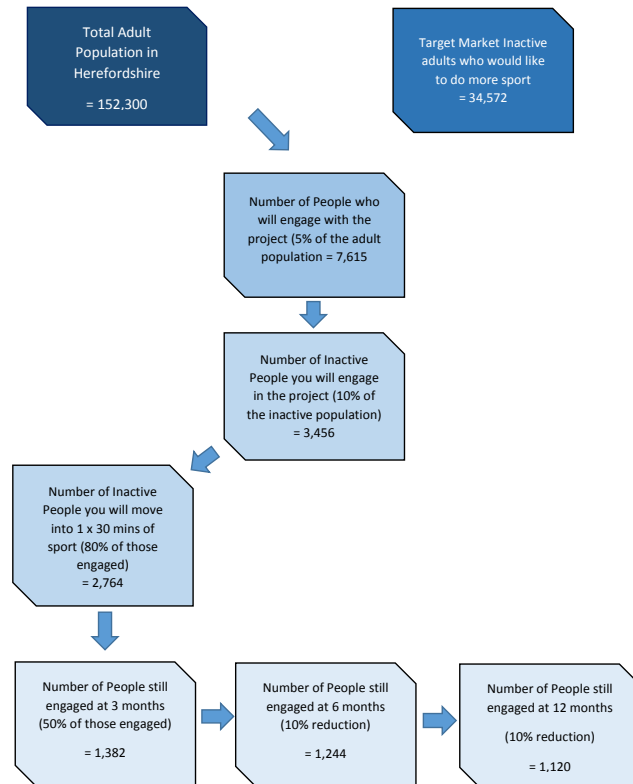




# Active HERE

## Active HERE Pathway

### Target Modelling



**"If sport and physical activity was a drug, it would be regarded as a miracle"**

Professor Sally Davies, Chief Medical Officer – Department of Health

Inactivity costs the UK economy:

**£7.4 BILLION**

**1 IN 6 DEATHS** in the UK are caused by inactivity

56% of adults meet the guidelines of 150 minutes a week of moderate intensity physical activity. For over 2/3<sup>rd</sup> of them sport is part of the activity mix.

**HOW TO TAKE:**  
 150 MINUTES OF MODERATE INTENSITY A WEEK.  
 BROKEN DOWN INTO BOUTS OF TEN MINUTES OR MORE.

A WISE CHEMIST. OPEN 365 DAYS A YEAR  
 (PMT) 01844 44 0 300 3000. Toll 16 16pm-10pm 10 300 3000

**SPORT ENGLAND**

# National Diabetes Prevention Programme

- it is a key deliverable within the NHS Forward Plan as an example of sustainable and transformational change
- England is the first country to implement at scale a national evidence-based programme
- Herefordshire was selected as a demonstration site following an expression of interest
- it will reduce incidence of Type-2 diabetes
- four lead providers will be procured nationally announced 10 March, ready to start in June
- Herefordshire will select through a mini competition which one delivers here, completed by June
- the programme lasts a minimum of 9 months and the goals will be weight loss, UK dietary recommendations, physical activity recommendations
- CCG is the lead organisation and the council is a partner within a MoU with DoH – our task is to case- find and aid recruitment into the programme and ensure local alignment of the national provider with local provision - referrals expected : year 1 – 1350; year 2 – 2004.
- NHS Health check will be a key route to identifying people who are pre-diabetic, this will be via inclusion of HbA1c blood test and slight amendments to the delivery, this will be piloted in two GP practices and lessons learnt quickly rolled out (estimate of 42% of people undertaking checks to be identified as potentially at risk and requiring HbA1c test –people per year)
- National provider will be selected and Expected number of people on the programme 2016-17 is approximately 1,700 referrals and approximately 600 completing the programme
- Payment for the national provider is on the basis of assessment, then on retention at four stages of the programme
- This will be implemented across England in waves, the first wave completed by the end of 2016 covering half of England

# Successes during 2015/16

- Sexual Health and Substance Misuse Services Commissioned and New Providers commenced service provision.
- Continued overall improvement of Childhood immunisation uptake in 2015-16
- Secured additional funding from CCG to provide nursing provision to special schools.

# Challenges during 2015/16

- MMR 2 and Low flu vaccine uptake in 2015-16
- 700k cut to the PH grant causing significant cost pressure; Staffing gaps and turnover within Public Health Team
- Lack of access to mobile technology and electronic records by health colleagues has inhibited sharing of information and access to services (inc. CQC recommendations)

# Key work for 2016/17

- Health and Wellbeing Toolkit for the Council Employees and rolling it out to other employers across Herefordshire
- Flu Immunisation Campaign 2016-17
- Diabetes Prevention Programme Implementation

# Key areas of risk for 2016/17

- Staffing gaps - recruitment and retention of staff, including the need to recruit specialist capacity in order to fulfil public health function
- Reducing inequalities: migrant & refugee challenges, opportunities and resources uncertain
- Need for continued advances and investment into information technology to reduce underreporting risks

# **Any opportunities or suggestions for future scrutiny work**

- Mental health services for children and young people. Supporting schools and young people.
- Delivery of an obesity framework
- Extent to which public health is imbedded in Sustainability and Transformational Programme work